

CRITICAL CARE

ACUTE NIV

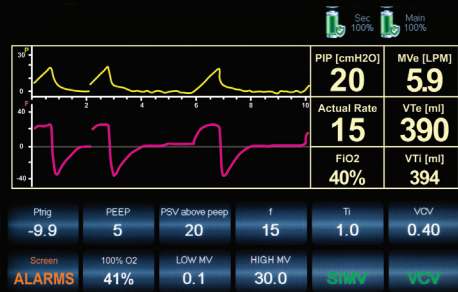
TRANSPORT



Flight F60 T

maximum value

Excellent flexibility in a diversified hospital environment



Ease of Use

- Quick Start
- 7.1" Touch-Screen
- 1 Screen Technology - no drill down menus



Excellent NIV Performance

- 60lpm leak compensation
- 220lpm maximum flow
- Enhanced synchronization with sensitive triggering

Fully featured life support

- Volume and Pressure modes
- Exhaled Volume Measurements
- Extensive Alarm System
- Apnea Ventilation

Advanced Monitoring

- 72 hrs trends with adjustable scale
- PV and FV Loops
- Lung Mechanics:
 - Static/dynamic Compliance
 - Resistance
 - Plateau Pressure
 - Auto PEEP

Unique Weaning Mode

- MVG with Trigger Delay
- Improved Patient Comfort
- Adaptive PSV (Lower PIP for equal Volume)
- Better Weaning
- Enhanced patient synchronization

ICU Features in a 5.5Kg Ventilator

Powerful ventilation

- Pressure Control up to 80cmH2O
- PEEP up to 40cmH2O

Intra-hospital transport

- Easily detaches and moves with patients
- Standard 8-hour battery
- Mobile stand with quick-release
- Compact and light-weight (12lbs, 5.5Kg)



FLIGHT 60 Technical Specifications

Turbine Configuration

MODES	
	ACMV - PCV/VCV/PRVC
	SIMV - PCV/VCV/PRVC
	SPONT (CPAP, BPAP)
	Volume Guarantee
	B-Lev (Bi-Phasic, APRV)
CONTROLS	
NPPV	OFF/LOW/HIGH (leak compensation up to 60 LPM)
VG Mode	VtG (Tidal Volume Guarantee) MVG (Minute Volume Guarantee)
SIGH	ON/OFF
2min 100% O ₂ Function	ON/OFF
Tidal Volume	30 to 2,200 ml
Breath Rate	1 to 99 b/min
Inspiration Time (Ti)	0.1 to 3.0 sec
Flow	2 to 220 L/min
Pressure Control	5 to 80 cmH ₂ O
Pressure Support (PSV)	0 to 60 cmH ₂ O
PEEP/CPAP	0 to 40 cmH ₂ O
Pressure Trigger	-20.0 to -0.1 cmH ₂ O
Flow Trigger	1 to 20 LPM
Rise Profile	5 levels
PSV Ti	0.1 to 3 sec
PSV Flow Termination	10% to 90%
Volume Control	Time/Flow
Flow Waveform	Square/Descending
FiO ₂	21% to 100%
FiO ₂ Sensor	ON, OFF, Calibrate
Manual Breath	0 to 3 sec
Panel Lock	ON/OFF
Trends	ON/OFF/Clear
VG Mode Controls	
Target VtG	30 to 2,200 ml
PSV min	0 to 60 cmH ₂ O
PSV max	5 to 60 cmH ₂ O
Trigger Delay	ON/OFF
B-Lev Controls	
P High	3 to 60 cmH ₂ O
P Low	0 to 30 cmH ₂ O
T High (Ti)	1 to 15 sec
T Low	0.5 to 5 sec
Inverse I:E	30:1
ALARMS (variable)	
Alarm Prioritization	3 Levels – Caution, Medium, High
Low Minute Volume	0.0 to 50 L/min
Low Pressure	OFF, 1 to 98 cmH ₂ O
High Pressure	4 to 99 cmH ₂ O
High Minute Volume	0.1 to 50 L/min
High FiO ₂	31% to 99%, OFF
Low FiO ₂	OFF, 22% to 90%
High Rate	OFF, 1 to 99 bpm
Low Rate	OFF, 1 to 99 bpm
Low Vte	OFF, 10 to 2,200ml
Low Vti	OFF, 10 to 2,200ml
Apnea/Back-Up Ventilation	10-60 sec

* NOTE: Some features of the Flight 60 may not be available or cleared in all countries. For detailed information, contact your local Flight Medical representative.

ALARMS (automatic)	
	Check Circuit (Circuit Disconnect), Low/Empty Battery, O ₂ Supply Failed, Check O ₂ Sensor, Target Volume not reached
MONITORED PARAMETERS	
Waveforms	Pressure, Flow, Volume
Loops	Pressure/Volume & Flow/Volume
Trends	Rate, Peak Inspiratory Pressure & Vte (up to 72 hours)
Airway Pressure LED Gauge	-10 to 120 cmH ₂ O
Peak Inspiratory Pressure	0 to 120 cmH ₂ O
Base Pressure	0 to 99 cmH ₂ O
Mean Pressure	0 to 99 cmH ₂ O
Exhaled Tidal Volume	0 to 10L
Exhaled Minute Volume	0 to 99L
Inhaled Tidal Volume	0 to 10L
Inhaled Minute Volume	0 to 99L
Actual Breath Rate	0 to 99 b/min
Peak Inspiratory Flow	1 to 120 L/min
RSBI	0 to 200 1/min*L
FiO ₂	21% to 100%
I:E Ratio	1:99 to 3:1
Battery Level	100% to 0%, Low, Empty
SPECIAL FUNCTIONS	
Buzzer Level	LOW/HIGH
Keypad Buttons	Keypad buttons with audible indicator
Power Save	ON/OFF/NIGHT
Languages	English, French, German, Greek, Hungarian, Italian, Polish, Portuguese, Russian, Spanish, Turkish
Quick Start	5 preset ventilation modes
SIZE AND WEIGHT	
Dimensions (WxLxH)	29 x 28 x 25 cm / 11.4" x 11.0" x 9.8"
Weight	5.5 Kg / 12 lbs 6.0 Kg / 13.3 lbs (with integrated mixer)
OXYGEN	
O ₂ Mixer (optional)	Internal integral, electronically controlled
High Pressure	35 to 90 psi
Low Flow Port	0 to 15 L/min
Low Flow Blending Bag	0 to 15 L/min
POWER SUPPLY	
AC Power Inlet	100 to 240 VAC, 50-60Hz
DC Power Inlet	12 to 15 VDC
Internal Batteries	Hot Swappable 8 hours operation
Charging Time	Up to 3 hours
COMMUNICATIONS	
USB x2	Download Logs, SW Upgrade
RS232 x2	Remote Alarm and Monitoring
ENVIRONMENTAL	
Operation Temperature	-18°C to 50°C / -0.4°F to 122°F
Storage Temperature	-20°C to 71°C / -4.0°F to 160°F
Relative Humidity	15% to 95% at 31°C / 88°F
Operation Altitude	110 kPa to 70 kPa
Water/Dust Resistance	IP34 (splash proof)
STANDARDS	
	IEC 60601-1, IEC 60601-1-2, IEC 60601-2-12, ASTM 1246F, ISO 10651-2/3, RTCA DO-160 F